



# Cleaved-Caspase-2 p18 (G170) Polyclonal Antibody

<b>Catalog No</b>	YP-Ab-00014
<b>Isotype</b>	IgG
<b>Reactivity</b>	Human;Mouse;Rat
<b>Applications</b>	WB;ELISA
<b>Gene Name</b>	CASP2
<b>Protein Name</b>	Caspase2
<b>Immunogen</b>	The antiserum was produced against synthesized peptide derived from human Caspase 2 p18 N-terminal. AA range:151-200
<b>Specificity</b>	Cleaved-Caspase-2 p18 (G170) Polyclonal Antibody detects endogenous levels of fragment of activated Caspase-2 p18 protein resulting from cleavage adjacent to G170.
<b>Formulation</b>	Liquid in PBS containing 50% glycerol, 0.5% BSA and 0.02% sodium azide.
<b>Source</b>	Polyclonal, Rabbit,IgG
<b>Purification</b>	The antibody was affinity-purified from rabbit antiserum by affinity-chromatography using epitope-specific immunogen.
<b>Dilution</b>	Western Blot: 1/500 - 1/2000. ELISA: 1/40000. Not yet tested in other applications.
<b>Concentration</b>	1 mg/ml
<b>Purity</b>	≥90%
<b>Storage Stability</b>	-20°C/1 year
<b>Synonyms</b>	CASP2; ICH1; NEDD2; Caspase-2; CASP-2; Neural precursor cell expressed developmentally down-regulated protein 2; NEDD-2; Protease ICH-1
<b>Observed Band</b>	18 or 35kD
<b>Cell Pathway</b>	nucleus,cytoplasm,mitochondrion,cytosol,membrane,
<b>Tissue Specificity</b>	Expressed at higher levels in the embryonic lung, liver and kidney than in the heart and brain. In adults, higher level expression is seen in the placenta, lung, kidney, and pancreas than in the heart, brain, liver and skeletal muscle.
<b>Function</b>	alternative products:Isoforms differ in the N- and C-termini,catalytic activity:Strict requirement for an Asp residue at P1, with 316-asg being essential for proteolytic activity and has a preferred cleavage sequence of Val-Asp-Val-Ala-Asp-[-],function:Involved in the activation cascade of caspases responsible for apoptosis execution. Might function by either activating some proteins required for cell death or inactivating proteins necessary for cell survival.,PTM:The mature protease can process its own propeptide, but not that of other caspases.,similarity:Belongs to the peptidase C14A family.,similarity:Contains 1 CARD domain.,subunit:Heterotetramer that consists of two anti-parallel arranged heterodimers, each one formed by a p18 subunit and a p12 subunit. Interacts with LRDD.,tissue specificity:Expressed at higher levels in the embryonic lung, liver and kidney than in the heart and b

**Background**

This gene encodes a member of the cysteine-aspartic acid protease (caspase) family. Caspases mediate cellular apoptosis through the proteolytic cleavage of specific protein substrates. The encoded protein may function in stress-induced cell death pathways, cell cycle maintenance, and the suppression of tumorigenesis. Increased expression of this gene may play a role in neurodegenerative disorders including Alzheimer's disease, Huntington's disease and temporal lobe epilepsy. Alternatively spliced transcript variants encoding multiple isoforms have been observed for this gene. [provided by RefSeq, Jan 2011],

**matters needing attention**

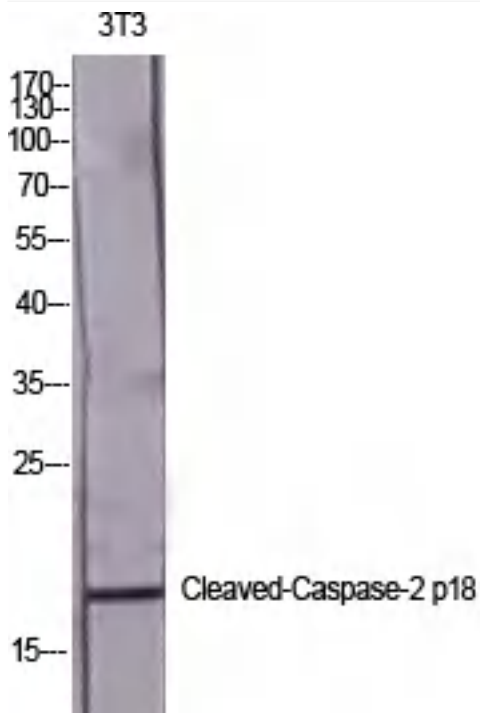
Avoid repeated freezing and thawing!

**Usage suggestions**

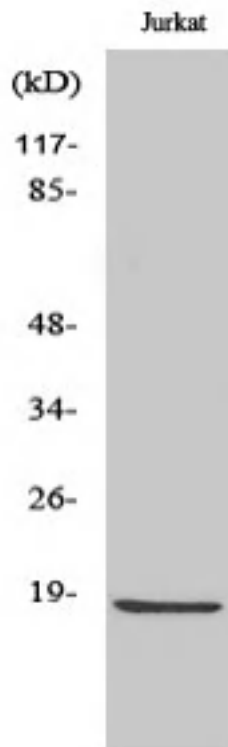
This product can be used in immunological reaction related experiments. For more information, please consult technical personnel.



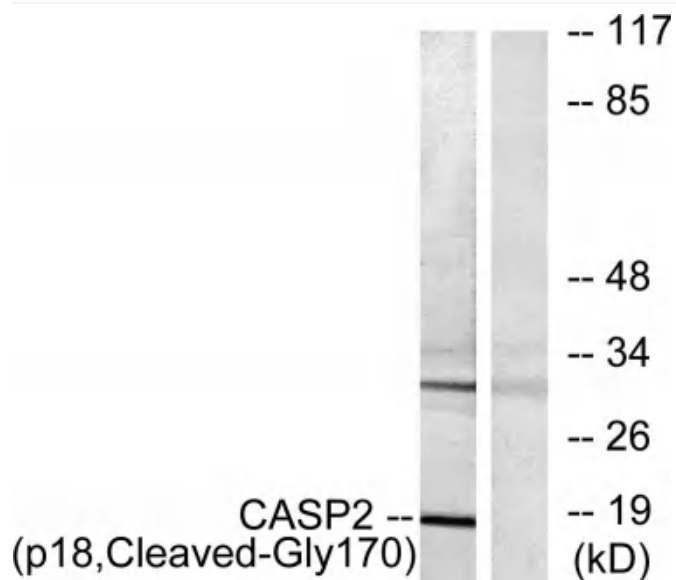
## Products Images



Western Blot analysis of various cells using  
Cleaved-Caspase-2 p18 (G170) Polyclonal Antibody  
diluted at 1:2000



Western Blot analysis of Jurkat cells using  
Cleaved-Caspase-2 p18 (G170) Polyclonal Antibody  
diluted at 1:2000



Western blot analysis of lysates from Jurkat cells, treated with etoposide 25uM 24h, using Caspase 2 (p18, Cleaved-Gly170) Antibody. The lane on the right is blocked with the synthesized peptide.